

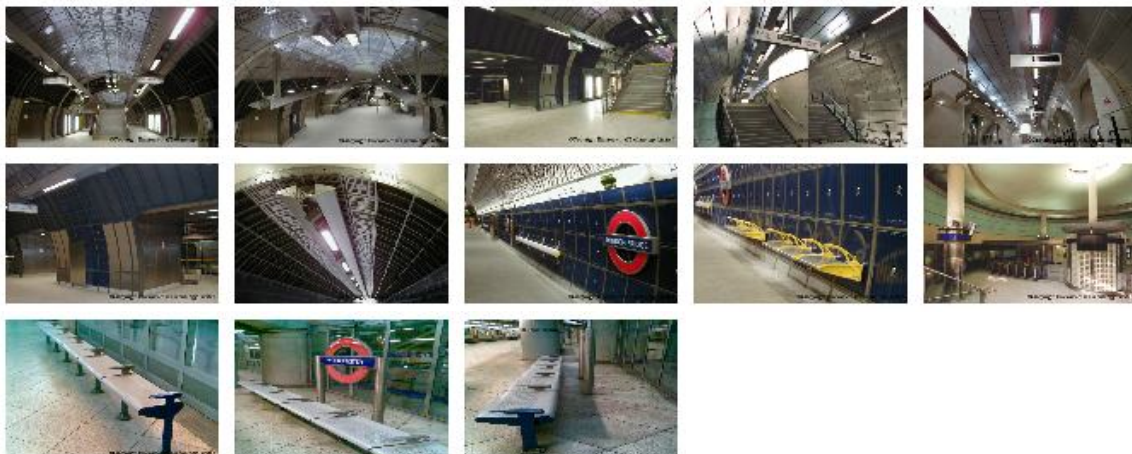


Jubilee Line Extension Project

A range of packages on individual and multiple stations, exceeding £10 million in value, on a line-wide basis, for the product design-development, manufacture, and installation, of a Secondary Services Distribution System (SSDS) Boom, to a total length of approximately 3500 metres (3.5km), installed at Waterloo, Westminster, Southwark, London Bridge and Bermondsey Stations, Aluminium and Stainless Steel Internal and External Cladding, Pre-Patinated Copper Cladding to the Culling Road Shaft, the Lighting Frieze to many of the main stations, Individual Seating Units and Leanbar Seating, 7 metre 'Totem' Services Units at Canary Wharf Station, Custom-designed feature perforated Acoustic Ceilings and Internal Cladding, Stainless Steel aerofoil fins to escalators.

Clients:	London Underground Limited - Jubilee Line Extension Project (JLEP)
Architects:	JLEP Station Architecture & Design Ian Ritchie : Architects Sir Norman Foster & Partners MacCormak Jamieson & Prichard : Architects Michael Hopkins & Partners Weston Williamson : Architects.
Designated Contractors:	Balfour Beatty Amec JV (C.102) Costain Taylor Woodrow JV (C.104) Drake & Scull Limited (C.206) O'Rourke Civil Engineering Limited (C.103)

Picture Gallery



Web: www.etl-entech.co.uk | Phone: 01438 812812 | Fax: 01438 814224 | Email: entech.admin@etl-entech.co.uk